



# Kimberly Roberson

DEC 30, 1956 - OCT 12, 2024



Scan to Visit



MAUI MEMORIAL PARK  
NAKAMURA MORTUARY  
CEMETERY, CREMATION & FUNERAL

# Table of Contents

<b>Obituary</b> .....	Page 3
<b>Tribute Wall</b> .....	Page 5
<b>Media</b> .....	Page 6



# Kimberly Roberson

DEC 30, 1956 - OCT 12, 2024

**K**imberly Ann Roberson, 67, passed away peacefully at her daughter's home on October 12, 2024 in Wailuku, Hawaii.

Kim was born on December 30, 1956 in Lima, Ohio, the second of six children to Dean and Carol (Pepiot) Boate. She grew up in North Texas and married her high school sweetheart, Mark Roberson, in 1978. Kim and Mark had two daughters, Ashley and Lindsey, and one son, Mark, all of whom she loved so very much. Kim worked various jobs as her children grew up, even as a P.E. teacher when her son was in elementary school. She was known mostly for her big smile and laugh, raspy voice, sense of humor, and tendency to curse without remorse. Kim loved animals, her dogs were family to her, and when she was younger she loved her horses as well. She loved music, though she couldn't remember a lyric, Mexican food and margaritas, watching her kids and grandkids play sports, floating the river, and sitting at the beach.

In 2016, Kim was diagnosed with two forms of cancer, one of which was stage IV. She bravely fought over the next eight years so she could have more time with her family. Kim handled the hardest challenges with a sense of humor and a "don't f with me" attitude, her trademark stubbornness on display until the very end. She was fortunate to spend her last few months in one of her favorite places, Maui.

Kim will be missed most by her children - Ashley Gonzalez and her husband Jorge, Lindsey Roberson, Mark Roberson and his wife Robyn; her grandchildren, whom she loved more than anything - Trey, Brandon, Avery, Gavin, Bailey, Bryce, and Ava; her siblings - Sabrina Hamilton, Melissa Sauer and her husband Ken, Kathy Koonce, Mike Boate and Deanna Bokinsky, Mary Pat Henderson and her husband Kevin; and all her beloved nieces, nephews, and dearest friends.

Kimberly was preceded in death by her parents, Dean Boate and Carol Pepiot.

No formal service will be held, Kim didn't want that and made us promise not to. Instead, she wants us to party and celebrate her life, so put on some Eagles, dance, and drink a margarita!



## Obituary

**Kimberly Roberson**

DEC 30, 1956 - OCT 12, 2024

---

In lieu of flowers, please consider making a donation to the Kidney Cancer Association or the American Cancer Society.



# Tribute Wall

**Kimberly Roberson**

DEC 30, 1956 - OCT 12, 2024



**Linny** shared 13 photos to the **Tribute Wall** album.

No matter how hard it was for us to show love to one another, you did a good job in making sure I know better. you do/did love me. I love you too. And thanks to you, I'm learning to forgive & learn.. Thank you for our time here together. I miss you so much. 🌸



January 13 at 9:24 AM



**Jeff Lloyd Williams** posted:

From the entire Williams Family, we offer our most sincere condolences to the Roberson Family...We have known Kim for a short couple of years and are saddened by your loss. We do know that Kim was indeed strong and a fighter as proven over the past years in her battle with her illness. We also respected and appreciated her love for her family, she loved each and every one of you, and that was easy to see. She often spoke glowingly about her grandchildren and made it known that Mark was a pretty good pitcher in his day....I repeat in his day long ago....Focus on the good times and find peace in the many happy memories that were made in a life that was well lived....And for Kim as the worlds greatest band the Eagles song says....Take it Easy....RIP

October 21 at 5:15 AM



**Mark C Roberson** October 26 at 2:20 PM

Thank you Jeff love ya buddy



**Jeff And Darcy Williams** lit a candle in honor of Kimberly.

Jeff and Darcy Williams lit a candle in memory of Kimberly Roberson



October 19 at 2:55 PM



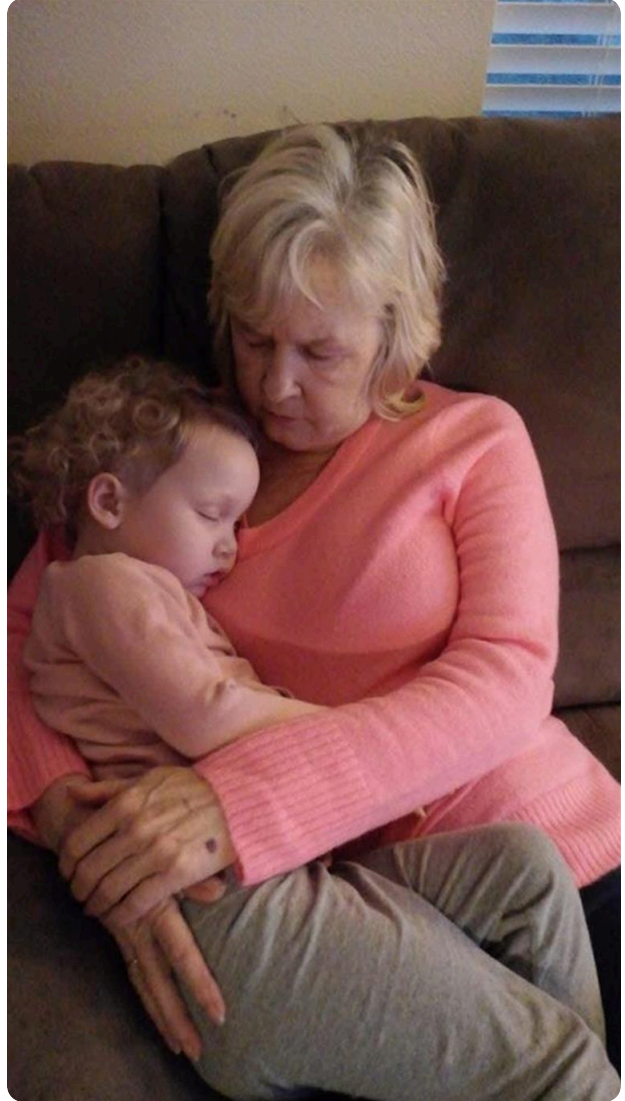
# Media

**Kimberly Roberson**  
DEC 30, 1956 - OCT 12, 2024



Linny shared 13 photos to the **Tribute Wall** album.

January 13 at 9:24 AM





**Media**

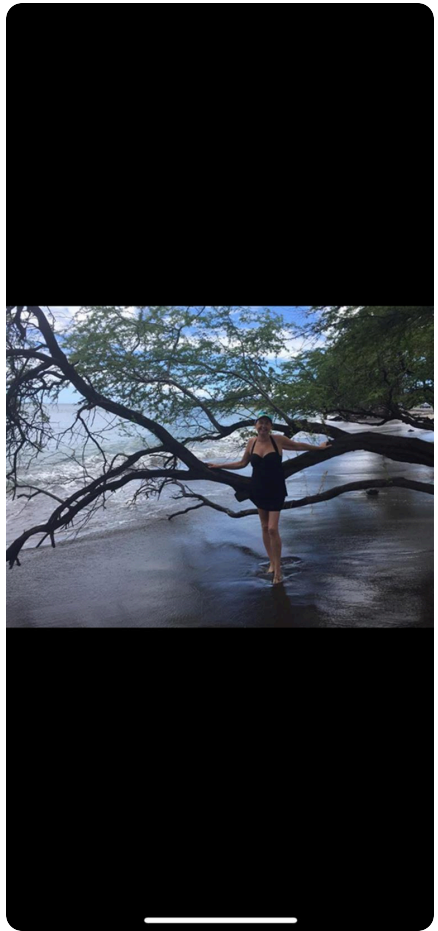
**Kimberly Roberson**  
DEC 30, 1956 - OCT 12, 2024





# Media

**Kimberly Roberson**  
DEC 30, 1956 - OCT 12, 2024





**Media**

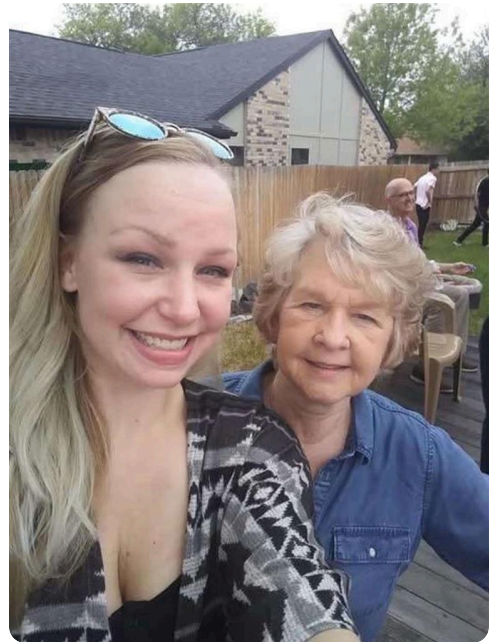
**Kimberly Roberson**  
DEC 30, 1956 - OCT 12, 2024





# Media

**Kimberly Roberson**  
DEC 30, 1956 - OCT 12, 2024





# Memories only last if you share them

Join us in honoring Kimberly by contributing to a collection of shared memories.



Scan to Visit



MAUI MEMORIAL PARK  
NAKAMURA MORTUARY  
CEMETERY, CREMATION & FUNERAL